

Heckrodt Wetland Reserve includes 76 acres of forested wetland, wetland meadow, open water, and upland field



communities. The wheelchair & stroller-friendly 3+ mile trail system includes a boardwalk trail that allows access to the wetland without getting wet feet! The Reserve is home to a variety of mammals, birds, insects, reptiles, and amphibians. Facilities include a nature center with indoor living wetland and live reptiles, amphibians, and fish, as well as mounted specimens of Wisconsin mammals and bird species. Educational programs are provided for schools, daycares, special focus groups (pre-school, grade school, and senior citizens), and the general public. Our goal is to provide visitor education while fostering an ethic of environmental stewardship in a fun, hands-on atmosphere.

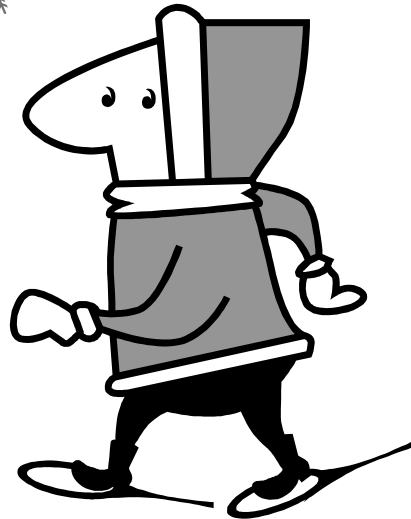
**Heckrodt Wetland Reserve**

P.O. Box 554  
Located at 1305 Plank Road  
Menasha, WI 54952

Phone: 920-720-9349  
Fax: 920-720-2393  
[www.heckrodtwetland.com](http://www.heckrodtwetland.com)

**Heckrodt  
Wetland Reserve**

**Appleton Area  
School District  
Winter  
School Field Trips  
Offered  
December-March  
2008/2009**



P.O. Box 554  
Located at 1305 Plank Road  
Menasha, WI 54952  
For info call...920-720-9349  
Fax # 920-720-2393

Visit us on the web  
[www.heckrodtwetland.com](http://www.heckrodtwetland.com)

**School Programs at Heckrodt...**

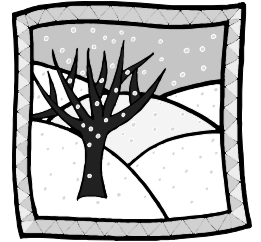
- Programs are designed to be 2 hour sessions, unless otherwise noted.
- Programs will run rain or shine.
- Program fee is \$2.00 per student. A minimum charge of \$25.00 is required. (If you are combining Wildlife Wonders with Winter Wonderland Walk, the fee is still \$2.00/student for both programs.)
- Limit of 10 adults (including teachers) for groups of 30 students or less and limit of 20 adults (including teachers) for groups over 30 students. An additional fee of \$2.00/adult will be charged after adult limit is reached.
- No younger siblings please!
- Dates fill quickly on a first come, first serve basis. Please book your field trip early!



**For more information, or to schedule a program, please call 920-720-9349**

Heckrodt Wetland Reserve is open all year and offers school programs Sept. through May, as well as summer school programs in June and July. Please call to request a brochure outlining our Spring & Summer 2009 school programs.

**OR...**Let us come visit you! We also do classroom naturalist programs December through February. Call to request our Classroom Naturalist brochure.



**Your field trip experience....**

Our naturalist educators offer child-friendly and hands-on activities for school students. Designed with age-appropriate experiences, these programs can be adapted to suit your curricular needs. Just let us know!

You will receive a written confirmation, as well as an enrichment packet full of pre- and post-activity ideas to enhance your field experience.

**Heckrodt's Mission...**

is to enhance, restore, and preserve the Reserve and educate all people in the importance of conserving our natural resources while promoting the Reserve's many recreational opportunities.

# Program Options

## Wildlife Wonders

Grades K-8



These programs offer a glimpse into the life of the animals that may live in a wetland. Puppetry and stories are included in these programs. For older students, scientific discovery will help them learn and understand the special relationships between humans and wildlife. Choose one of the following animal options: deer, bear, raccoon, wolf, fox, backyard birds, owls, or groundhog.

\*\*for K-3 we suggest you combine one of our Wildlife Wonders programs with Winter Wonderland Walk.

\$2.00/student

AASD Science Standards F.4.1; F.4.2; F.4.3; F.4.4; F.8.2; F.8.6



## State Academic Standards

All of these fun, hands-on, educational programs have been assessed according to Wisconsin's State Model Academic Standards. If you would like a copy of the standards that fit your program choices, please contact Heather at 920-720-9349.

## Make Tracks!

Grades K-3



Students will become nature detectives, unraveling some tracking mysteries. Then, experience the wetland in a unique way! We will strap on snowshoes and go out on the Reserve to look at winter animal tracks and other animal signs. Making plaster animal tracks is optional.

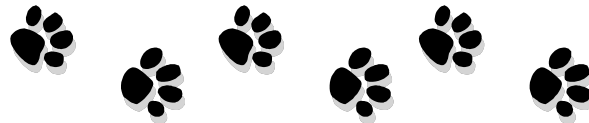
Snowshoeing option is available for this program. (Please request snowshoeing option at the time of program booking.)

\$2.00/student\*

\*Additional \$.50/student to make plaster animal tracks.

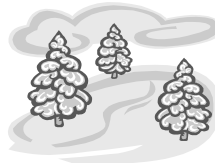


AASD Science Standards F.4.1; F.4.2; F.4.4



## Winter Ecology

Grades 4-8



A 2-hour exploration of the Reserve will focus on how plants and animals survive the cold winter months. Snowshoeing option is available for this program. (Please request snowshoeing option at the time of program booking.)

\$2.00/student

AASD Science Standards F.4.1; F.4.2; F.8.7; F.8.2

## Winter Survival Skills

Grades 4-8



During this 2-hour hands-on program, students will learn basic winter survival skills, including survival fire building, winter shelters, and how to dress appropriately for winter outdoor activities.

\*\* This program is offered January through March weather permitting. Please book this program before January 1st to assure program availability.

\$2.00/student

AASD Science Standards E.4.7; F.4.1; F.4.2; E.8.6



## Winter Wonderland Walk

Grades K-4

Take a winter nature hike with a naturalist. We will look for animal tracks and other winter animal signs, while walking through the beautiful, snowy



Reserve. Snowshoeing option is available for this program. (Please request snowshoeing option at the time of program booking.)

\$2.00/student

\*\*This program must be coupled with a Wildlife Wonders program.

AASD Science Standards A.4.5; E.4.5; F.4.2; F.4.4; F.4.1

## \*\*\* About Your Field Trip...

### Appropriate dress for your program...

- Please have children dress in layers, including winter jacket and snow pants or snowsuit.
- Children should wear insulated winter boots. No open-toed shoes please!
- Children should wear hat, mittens, etc.
- **We will not go out if wind chills are at what we consider to be dangerous levels for the children.**
- **Programs will be modified and we will plan on being indoors as much as possible if the weather is too cold or dangerous for the children to be outside.**

### Guidelines to share with your students...

- Picking and collecting is prohibited. This includes plants, animals, insects, turtles, frogs, snakes, etc.
- Have fun and learn something too!

### Picnic and restroom facilities

- Please make arrangements to reserve the use of our picnic pavilion at the time of program scheduling.
- We are a "Leave No Trace" facility. Please plan to carry out your picnic trash.
- Restrooms are available in the Nature Center.